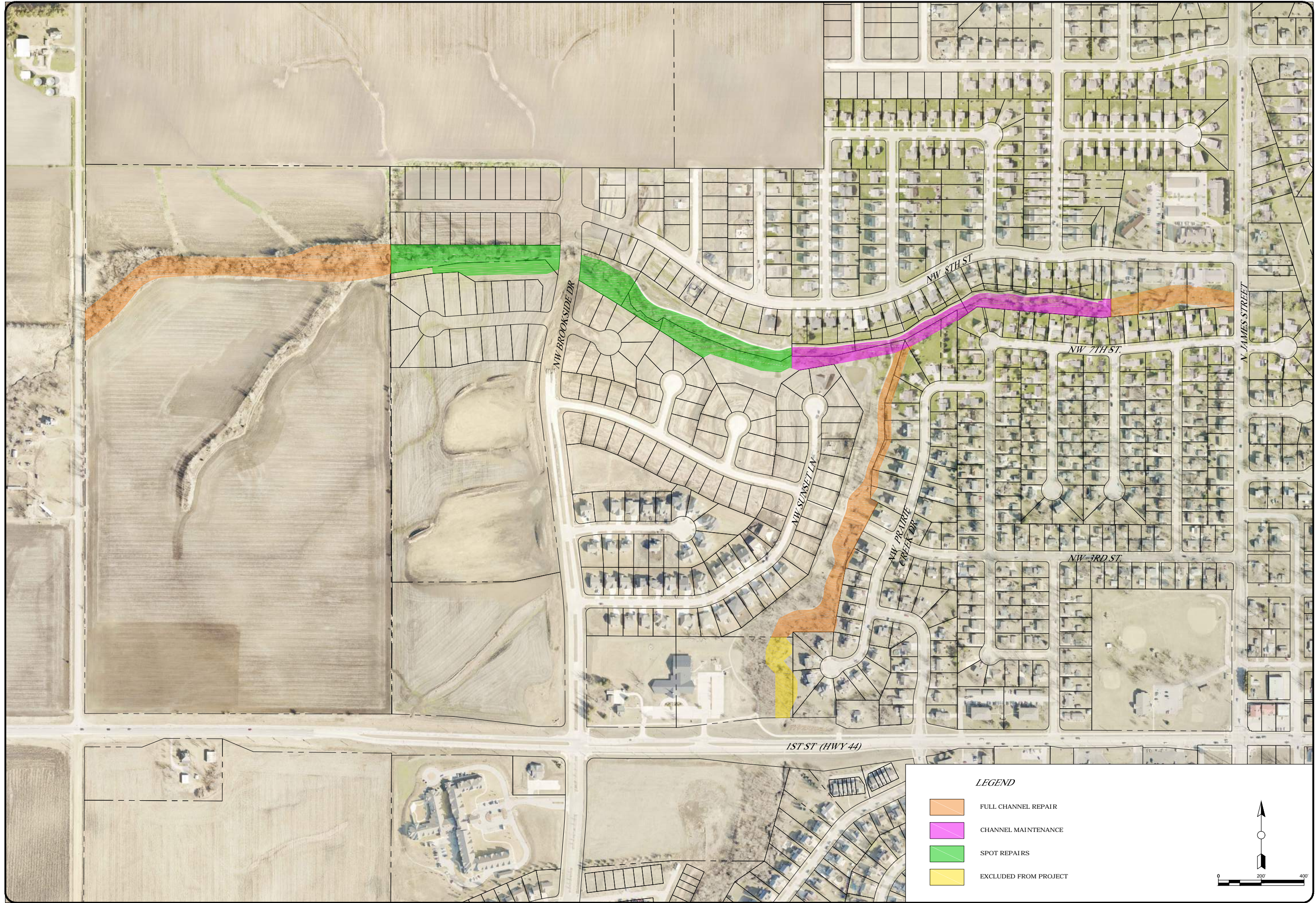


K:\proj\7000\7024-15B Little Beaver and Prairie Creek Channel Improvements\Drawings\Civil\7024-15B\_Proj\_Scope.dwg

DRAWING FILE NAME	LAYOUT NAME
PLOT STYLE TABLE	FOXGRAYSCALE.ctb
LAYER MGR NAME	C



**LEGEND**

	FULL CHANNEL REPAIR
	CHANNEL MAINTENANCE
	SPOT REPAIRS
	EXCLUDED FROM PROJECT

DATE	REVISION	BY	DATE
		SPS	11/17
		SRS	11/17
		CHECKED	
		LAST UPDATE:	11/28/17

FOX Engineering Associates, Inc.  
414 South 17th Street, Suite 107  
Ames, Iowa 50010  
Phone: (515) 233-0000  
FAX: (515) 233-0103



**PROJECT SCOPE MAP**  
LITTLE BEAVER & PRAIRIE CREEK CHANNEL IMPROVEMENTS  
GRIMES  
IOWA

PROJECT NO.  
7024-15B  
SHEET  
C